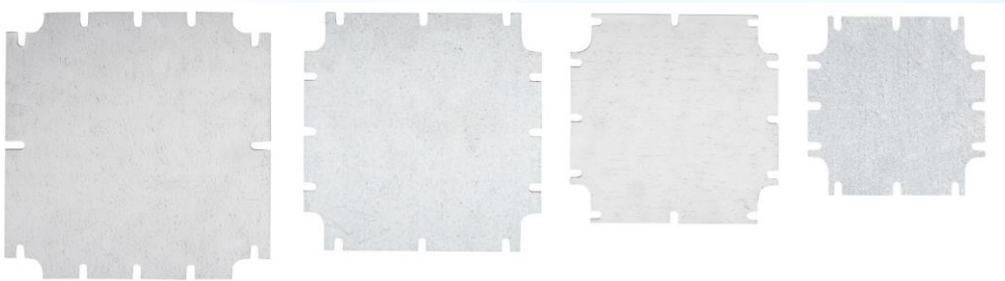


## Accessories for our new line of hermetic enclosures

Available soon

### Plates for mounting inside enclosures

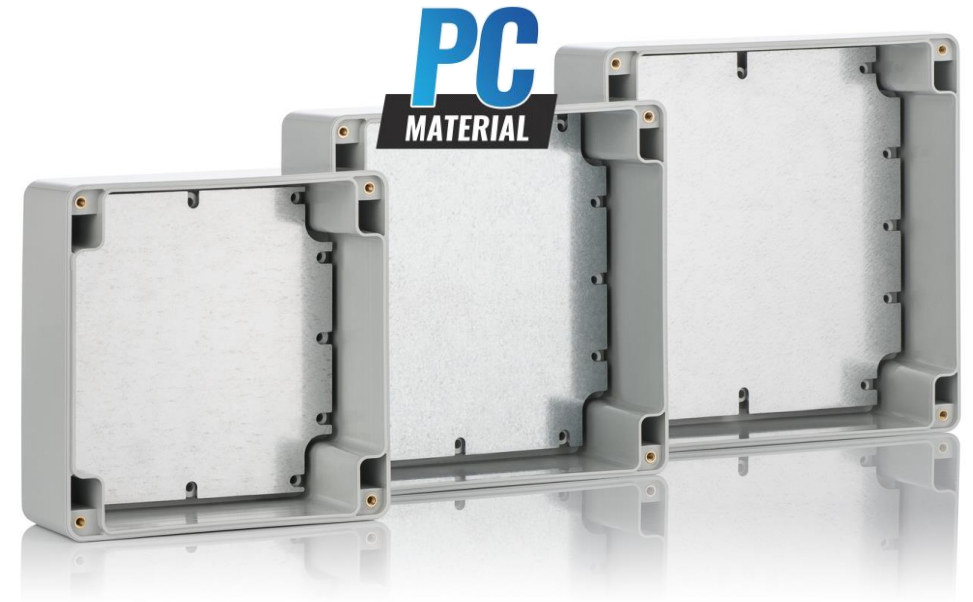
The plates are made of 2-mm galvanised steel sheet. They facilitate the installation of various elements anywhere on the mounting plate. The plates are mounted to the posts in the enclosure with screws. They facilitate the assembly of complicated devices, consisting of a large number of elements outside the enclosure, and then the installation of such a complex device in the enclosure. Thanks to their use, it is also possible to easily attach small elements which do not match the spacing of the posts in the enclosures.



Please send your requests for accessories to [kradex@kradex.com.pl](mailto:kradex@kradex.com.pl)



MANUFACTURER OF  
PLASTIC ENCLOSURES  
FOR THE ELECTRONICS



The picture shows the following products: ZP150.150.60 PC, ZP135.135.60 PC, ZP120.120.60 PC. Standard screws, M2 screws, bushings are additional accessories, available at an additional cost.

[WWW.KRADEX.COM.PL](http://WWW.KRADEX.COM.PL)